



Featured
COMMUNITY



Conveniently Located | Waller ISD | & More!

Community Pool, Splash Pad & Playground
Located Between U.S. Highways 290 and 249
Accessible to Premium Shopping and Restaurants

New Homes Starting from the Upper \$200s!

Cypress Green

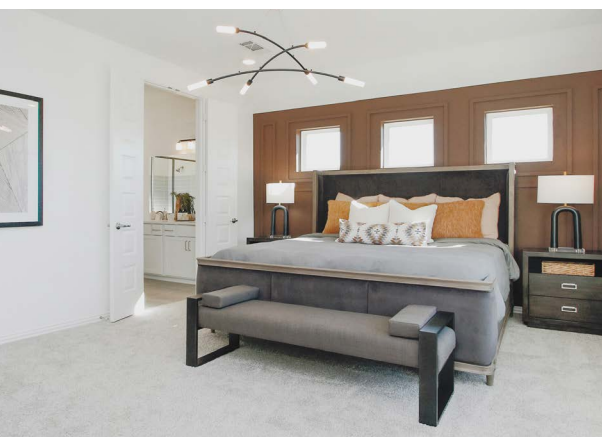
20111 Sedona Park Drive | Hockley, TX 77447

Quick Move-in Homes Available Now!

3 – 5 Beds | 2 – 4 Baths

1,540 – 3,050 SQ FT | 2 – 3-Car Garage

[View Community](#)



CALL FOR MORE DETAILS | 346.263.0075



brightlandhomes.com

©2025 Brightland Homes. All rights reserved. To qualify for Broker compensation, Broker/Agent must accompany prospect and register on the first visit or have called ahead to schedule an appointment. The Broker/Agent's commission cannot be used to reduce the purchase price of the home. Prices, promotions, incentives, floor plans, elevations, dimensions, specifications, materials and availability of homes are subject to change without notice or obligation. Prices may not include lot premiums, upgrades or optional features that may vary per community. Deposit restrictions may apply. Special Incentives available through the use of Builder's trusted Mortgage Company only. See the Sales Counselor for details. 25-HOU-012