

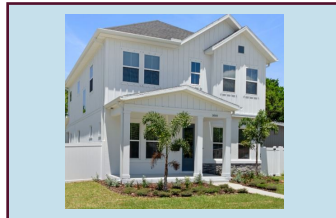
HOME SWEET Quick Move-in HOME

Make your move today with one of these beautiful
Central Living by David Weekley homes in South Tampa



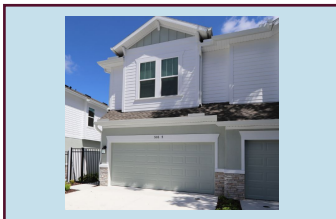
\$1,099,990

3603 W North B St
2974 sq. ft., 2 Story
4 Bedrooms, 4 Full Baths,
2-car Garage



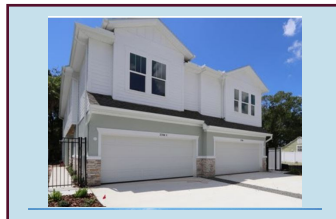
\$874,990

1934 W Nassau St
2563 sq. ft., 2 Story
4 Bedrooms, 3 1/2 Baths,



\$759,990

505 W Euclid Ave Unit 2
2134 sq. ft., 2 Story
3 Bedrooms, 2 1/2 Baths,
2-car Garage



\$824,990

2706 W North A St Unit 2
2154 sq. ft., 2 Story
3 Bedrooms, 2 1/2 Baths,
2-car Garage



Find your dream home
by contacting
Jenny 813-240-0028

or

Christus 813-380-2215

CENTRAL LIVING
by **David Weekley Homes**



See a David Weekley Homes Sales Consultant for details. Prices, plans, dimensions, features, specifications, materials, and availability of homes or communities are subject to change without notice or obligation. Illustrations are artist's depictions only and may differ from completed improvements. Copyright © 2018 David Weekley Homes - All Rights Reserved. [CITY], [ST] (ALLW102155)

